

# EL-USB-ACT

## Quick Start Guide



Thank you for purchasing a Lascar **EL-USB-ACT** data logger.

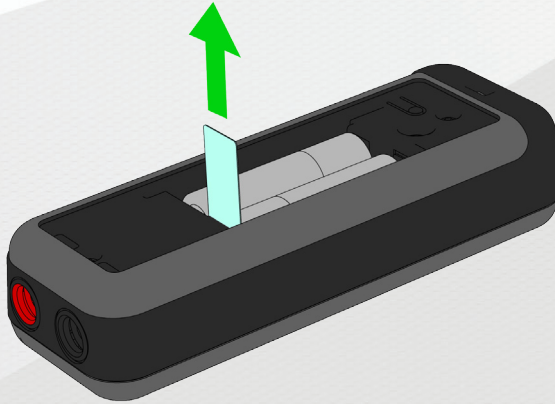
This quick start guide provides basic information on the use of your product. For more detailed instruction consult the user manual on the mini-CD supplied.

## Getting to know your data logger

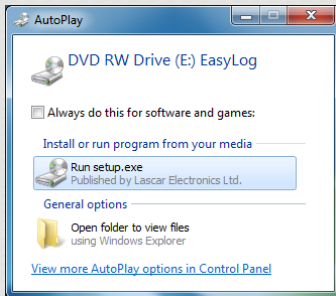


## Install your battery

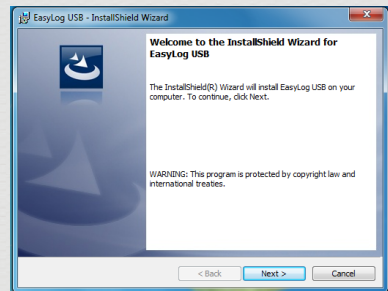
The EL-USB-ACT is supplied with two AA batteries fitted. To begin use the battery tab must be removed as shown below.



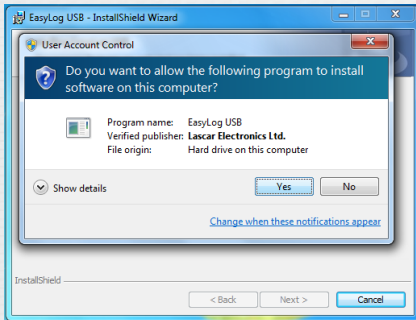
## Install EasyLog Software and Driver



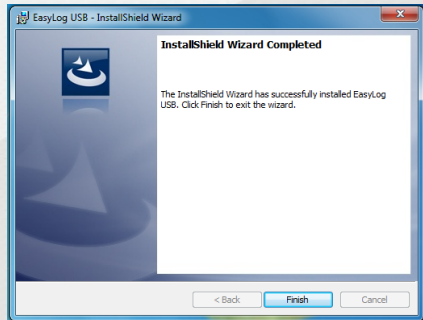
1 Insert the EL-WIN-USB CD into the CD drive of your computer. If the CD does not automatically load, navigate to the CD and double click 'Setup'.



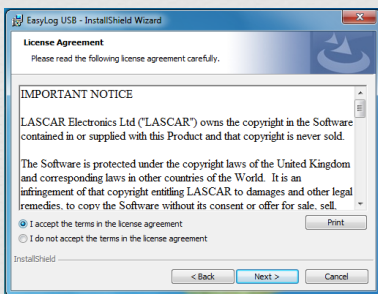
2 Click 'Next'.



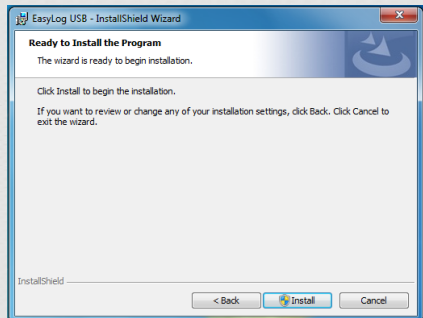
3 Read the 'IMPORTANT NOTICE', select 'I Agree' and then 'Next'.



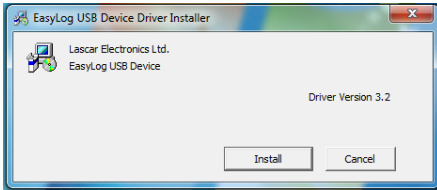
4 Click 'Install'.



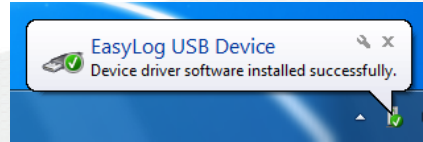
5 Click 'Yes'.



6 Click 'Finish'.



7 Click 'Install'.



8 You have successfully installed the necessary software and driver for your EL-USB-ACT data logger. An 'EasyLog USB' icon will be placed on your desktop.

## Your Data Logger is now ready for use!

To begin using your data logger, connect the mini-USB cable to your data logger and an available USB port on your PC.

Setup the data logger by clicking 'Setup and start the USB data logger' and follow the onscreen instructions.

When the setup is complete, the data logger should be removed from the USB port to begin logging. For advice on how to best use the data logger for your application, please contact Lascar's customer service team.

## Selecting a Current Clamp

The EL-USB-ACT is compatible with most current clamps which output an AC or DC mV signal proportional to the amount of current the clamp is detecting. It is advisable to select a current clamp which features 4mm banana plugs for quick connection to the EL-USB-ACT; otherwise banana plugs must be manually fitted in order to connect to the data logger.

Please note that the maximum output voltage from the clamp should not exceed 723V a.c. or 1000mV d.c.; an input to the data logger above these values may damage the data logger. If you are unsure of your choice of current clamp, please contact Lascar for advice.

