

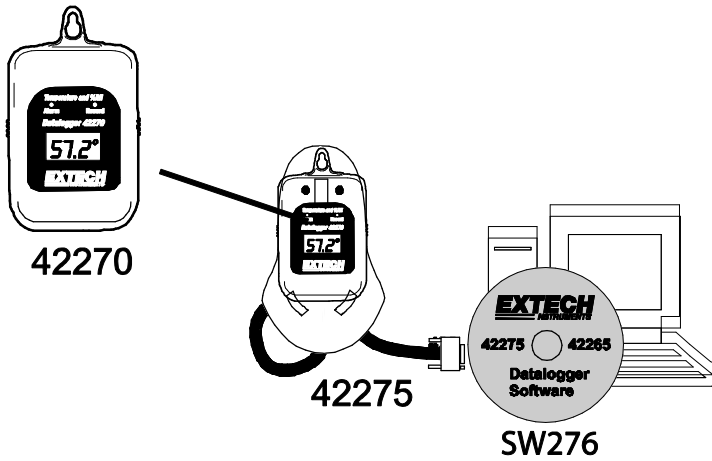
User Guide

EXTECH[®]
INSTRUMENTS

A FLIR COMPANY

Model **42275** Temperature and Humidity Datalogger Kit

Model **SW276** Datalogging Software



CE

Introduction

Congratulations on your purchase of Extech Instrument's Datalogging instrumentation and software. This User Guide serves two purposes, refer to the list below:

1. This User Guide covers the following products entirely with regard to hardware and software operation:

Model 42275: Temperature and Humidity Datalogging Module with docking station and SW276 Windows™ Software

Model SW276: Windows™ Datalogging Software

2. This User Guide covers the following products with regard to software and some hardware operation. A separate manual is supplied with your instrument that covers all of the hardware operation.

Model 42270: Temperature and Humidity Datalogging Module

Applications

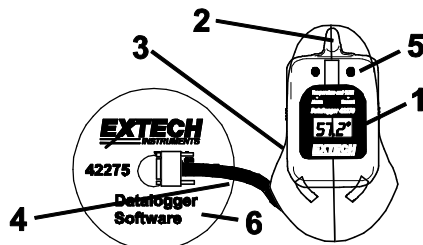
The Datalogging modules models 42270 and 42260 can be used to monitor the temperature of greenhouses, warehouses, food transports, aircraft cabins, refrigerated trucks, containers, museums, and HVAC equipment. The Model 42270 records Relative Humidity readings in addition to temperature readings. Modules can store 16,000 (8000 temperature and 8000 %RH for 42270) readings that can later be transferred to PC or directly printed using the Model 42276 Programmer/Printer.

The datalogger module display will not switch on until activated through the software

The datalogger module display will not switch on until it is activated by the software in the LOGGER SET menu as described later in this manual. In LOGGER SET the user selects the type of recording activation. When the logger begins to log data, the display and status LEDs will switch on.

Description

1. LCD display
2. Mounting hole
3. Docking station
4. Interface Cable
5. Status LEDs
6. Software CD



Displays

LCD Display

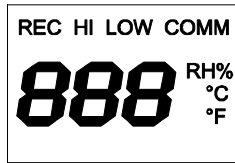
REC: Displayed while logging readings. Read the 'Recording Status' section for further details.

HI and LOW: Displayed when the High or Low Alarm limit is exceeded. See 'Alarm Status' below for further information.

RH%: Relative Humidity

C or F: Temperature units.

COMM: Appears when Datalogger is communicating with a PC.



Recording Status Indication

Both the RED status LED and the display indicator 'REC' will flash every 5 seconds if the sampling rate is set to 5 seconds or higher. If the sampling rate is set lower than 5 seconds, the indicators will flash every 1, 2, 3, or 4 seconds as programmed.

ALARM Status Indication

Both the YELLOW status LED and the display indicator 'ALM' will flash when the recorded value is higher than the user programmed High Alarm value or lower than the Low Alarm value. The Alarm status LED and the 'ALM' display indicator flash every 5 seconds if the sampling rate is programmed for 5 seconds or higher. If the sampling rate is set lower than 5 seconds, the indicators will flash every 1, 2, 3, or 4 seconds as programmed.

Low Battery Indication

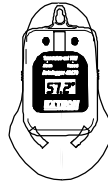
When the lithium battery's voltage nears the critical operating level the LCD displays 'LO'. To replace the battery, refer to the Battery Replacement section of this manual.

Software Installation

Installation Instructions

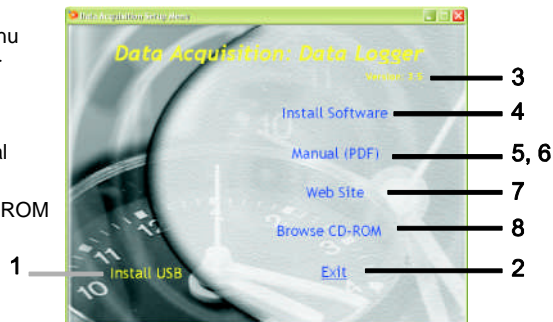
Place the supplied software CD in the PC CD-ROM drive.

1. Click on "Install Software" to start the installation of the software.
2. Click "Finish" to install the program to the default location or click on "Change" to enter the directory in which to install the program.
3. Follow the on-screen instructions to complete the program installation.



Setup menu description

1. Install USB driver
2. Exit: Close the Setup Menu
3. Software Version number
4. Software installation
5. Open the English manual
6. Open the Spanish manual
7. Visit the Extech website
8. View all items on the CD-ROM



Main Screen

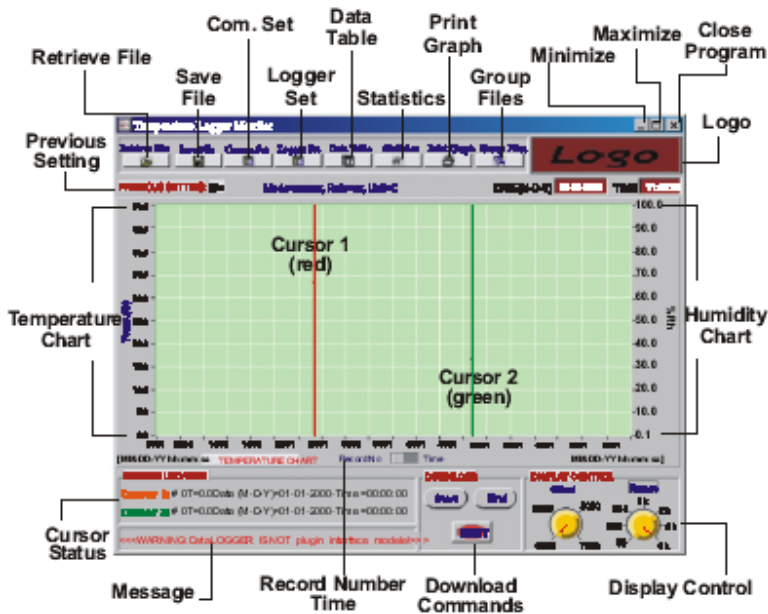


Diagram A: Main Screen

Cursor 1 and 2 Control

Click on a cursor line to select it. When the red cursor line is clicked, it turns bold red. When you click the green cursor, it turns bold green (colors may vary). The CURSOR STATUS field (lower left) shows the cursor positions. As the Arrow keys are used to select the last record or the next record, the cursor location numbers change to reflect their new position.

- Left arrow key: Moves to previous point on the current plot.
- Right arrow key: Moves to next point on the current plot.
- <Shift>-left arrow key: Moves back 10 points on the current plot.
- <Shift>-right arrow key: Moves forward 10 points on the current plot.
- <Home>: Moves to first visible point on the current plot.
- <End>: Moves to last visible point on the current plot.

The user can also click and drag the cursor with the mouse. The cursor tracks the mouse until the mouse button is released. When the mouse button is released, the cursor snaps to the nearest data point.

Offset Knob

Use the Offset control in the DISPLAY CONTROL field (lower right) to optimize the data viewing area. Press the up or down arrow key to increment or decrement the record number (with corresponding date) in the graph.

Zoom and Pan on Graphs

To zoom in, press the <Ctrl> key and click the left mouse button over the desired point; release the <Ctrl> key after the mouse button is pressed. The view resolution increases until the mouse button is released. To zoom out, click the right mouse button.

To pan, press the <Ctrl-Shift> keys and click the left mouse button over the desired point, and then drag the mouse to another point. The graph view scrolls so that the original point now appears under the new mouse cursor location. Drag the mouse anywhere on the screen.

To restore the view to its original state (after zooming or panning), press and hold the left mouse button and drag the line on the Offset or Range knob (located in the DISPLAY CONTROLS section).

Horizontal Axis select switch

Use the mouse to control the switch and select Record number or Time (HH:MM:SS) label for the horizontal axis of the graph.



Warning message

A warning message will appear on the lower left if the Datalogger is disconnected from the PC.

<< WARNING: Data Logger not plugged into interface module! >>

Display Control

After downloading or retrieving a record, the numbers on the "Offset" and "Range" knobs will change to:

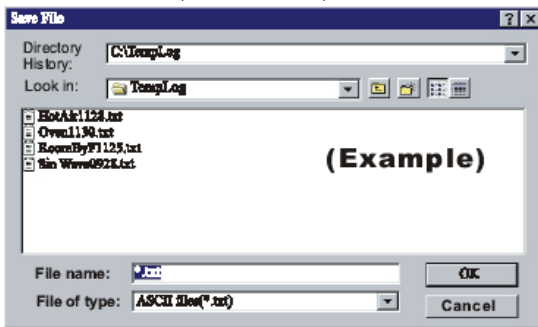
Offset: 0000/5000/10000/15000

Range: 50/250/500/1K/2K/4K/8K/12K/16K

Save File

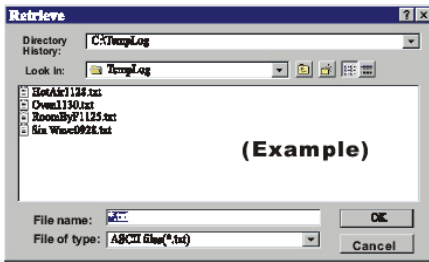
To save a transferred data file

Click on SAVE FILE, select a folder, and name the data file.



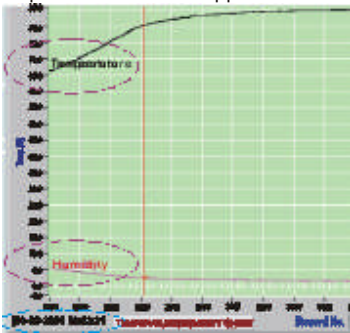
Retrieve File

Click on RETRIEVE FILE to retrieve a previously saved file.

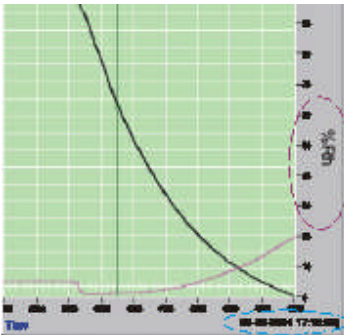


To aid in reading a graph, a grid can be drawn on the graph. A dialogue box at the bottom left hand corner shows the grid (CONTROL LOCATION Cursor 1 and 2)

After retrieving a file containing Humidity records, the labels "Temperature" and "Humidity" will appear at the beginning of the curves. If no Humidity data is transferred, only the Temperature curve will appear.



The date and time of the first point appears on the left hand corner. The last point's date and time appears on the right hand corner.



MAIN SCREEN WITH SAMPLE DATA

Com Port Setup

Select "Com. Set". Select the COM port, Baud rate (9600), Data bits (8), Parity (None) and Stop bits (1).

Select **OK** to accept settings, press **Cancel** to abort and exit.



Datalogger Settings

Press **LOGGER** to access the menu page

Sample Rate Setup

The screenshot shows the datalogger settings menu. The 'Sample Rate' is set to 0:0:1, which is circled in red. The 'Start Mode' is set to 'Schedule', also circled in red. The 'Start Date' is 08-04-2006 and the 'Start Time' is 11:38:43. Other settings include 'Sample Points' at 16000, 'Logger's Clock Setting' (Date: 08-04-2006, Time: 11:39:01), 'Sleep Mode Setting' (Non-Sleep selected), 'Logger's ID Setting' (Identifier: 88288), and 'Alarm Setting' (Channel: Air Temp., High Alarm: 85.0, Low Alarm: 15.0). There are 'Ok' and 'Cancel' buttons for each section, and a red 'EXIT' button at the bottom.

Number of Data Points

Select the desired number of data samples to log: 1000 / 2000 / 4000 / 8000 / 12000 / 16000. Scroll up or down to locate the value and then click **OK** to save.

For example, to select **1,000 samples**, the logger will stop logging (and will power off) when 1000 data points have been collected. Datalogging ceases when the datalogger is full. The yellow LED will stop flashing when datalogging ceases.

Sample Rate

Select the sampling rate in seconds (1 second to 12 hours). Scroll up to increase the time or down to decrease the time in seconds. The default sample rate is 2 seconds.

Start Modes

Scheduled Start

Scheduled Start sets the desired datalogging **Start Date and Start Time**. The datalogger will start when the clock reaches the user programmed time and date. Ensure that the datalogger is set to the current date and time.

Magnetic Start

Connect the datalogger to the PC to begin configuring the Magnetic start mode. Select **Magnetic** and ensure that the datalogger is set to the current date and time. Enter the desired ID (if any) and then press "**OK**" to confirm the Magnetic start setting. To start datalogging in Magnetic mode, pass a strongly magnetized object by the bottom of the datalogger. The LED will start flashing. Flashing rate depends on the sampling rate programmed.

Immediate Start

The datalogger starts recording when the "OK" button is pressed.

Start Mode Setup

Next Logger Setting

Sample Points: 16000

Sample Rate(HH:MM:SS): 0 : 0 : 1

Start Mode: Schedule

Start Date: 08-04-2006

Start Time: 11:38:43

Unit: °C

Alarm Setting

Channel: Air Temp.

High Alarm: 85.0

Low Alarm: 15.0

Logger's Clock Setting

Logger Date: 08-04-2006

Logger Time: 11:39:01

Sleep Mode Setting

Non-Sleep Sleep

Logger's ID Setting

Identifier: 88288

Calibration Setting

Calibration Setting

EXIT

Datalogger Clock Setting

Click OK to set logger to PC system time.

Alarm Setting

The default High Alarm temperature is 85 C
The default Low Alarm temperature is -40 C
The default High Alarm for Relative Humidity is 100%
The default Low Alarm Relative Humidity is 0%
Select the desired High value or Low value by scrolling up or down.

Start Date: 11-14-2001

Start Time: 10:56:46

Unit: °C(°F) RH-% alarm

High Alarm: 80.0

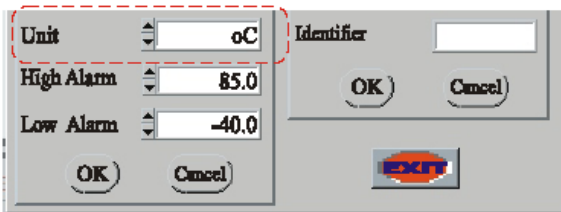
Low Alarm: 50.0

Ok Cancel

The ALM LED flashes:

- If the measured Temperature is higher than the HI Alarm setting or lower than the LO Alarm setting.
- Every second while the data is transferring to the PC.
- Once every datalogging interval. For example, if the sampling rate is set to 3 seconds, the ALM LED will flash every 3 seconds.

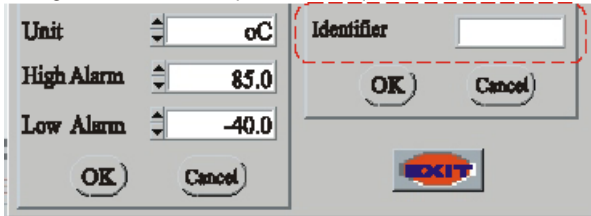
Unit Setting



Temperature can be displayed in "C" or "F"

Data Logger ID Setting

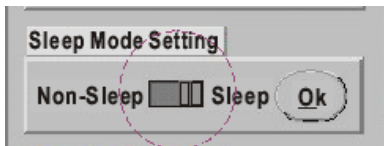
The datalogger's ID setting allows the user to provide a unique name for each datalogger (up to 8-digits).



Sleep Mode Setting

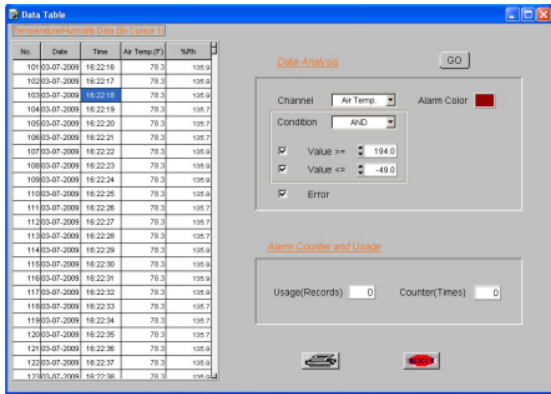
In Sleep Mode the Datalogger turns the display off after Datalogging has been completed. Select the Sleep Mode in software by moving the slide switch to the right for SLEEP then click OK.

If NON-SLEEP is selected, the logger will continually display the current Temperature / Relative Humidity. (The default is Non-Sleep)



Data Table

Press the DATA TABLE icon to view data



- GO Process the data using the conditions selected.
- Channel Selects Temperature or Humidity for analysis.
- Condition Selects if range values are "AND" (both occur) or "OR" (either occurs).
- Error Selects and counts all the error codes in the file.
- Usage Indicates the number of records that exceeded the limit condition selected.
- Counter Indicates the number of times a record or group of records exceeds the limit condition selected.

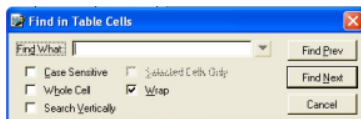
Goto

Right click in any cell to launch the "Go-to Table Cell" menu. Enter the row and column of the cell to locate.



Find

Right click in any cell to launch the "Find in Table Cells" menu. Enter search data and check the condition boxes as needed.



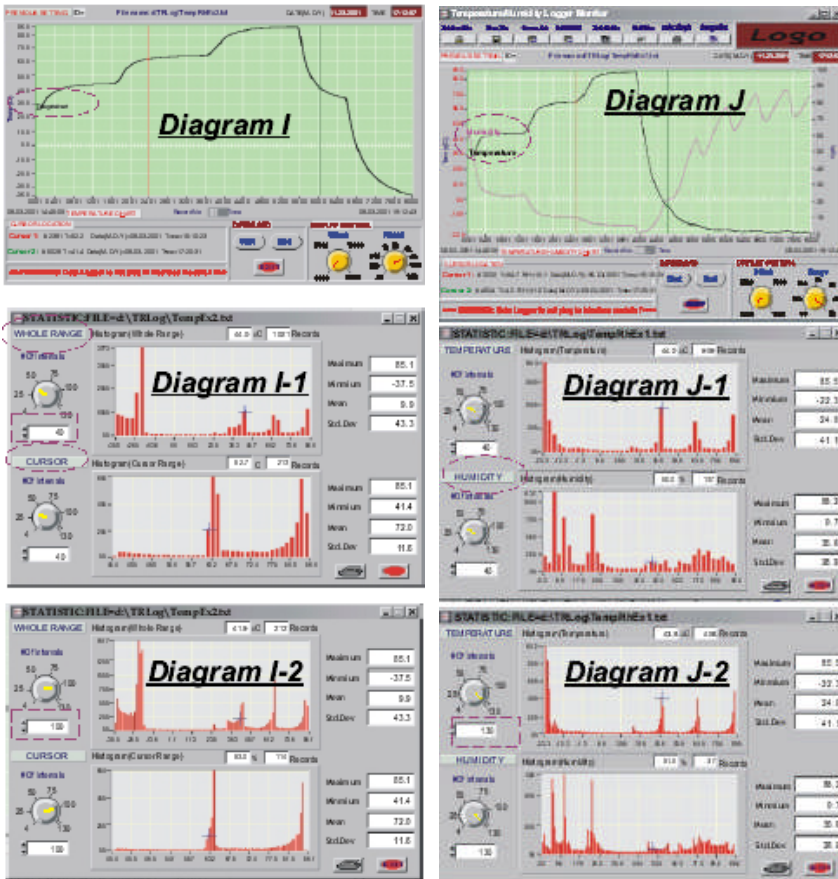
Statistics

Press the STATISTICS icon to view histograms of data based on the "Whole Range" or the "Cursor Range". See (Diagram I)

Whole Range - All of the logged readings.

Cursor Range - Only the readings between the two cursors.

1. Click and drag the knobs' yellow line (shown in the left side of **Diagram I-1**) to equally divide all sample readings into 4 divisions (up to 130). This can also be done by clicking on the UP/DOWN arrows or by keying in the value directly.
2. Refer to the top of **Diagram I-1**, notice that there are 1021 logged readings at 44°C. There are also 213 readings between the two cursors at 62.7°C
3. If all of the logged readings are placed into 100 divisions, the histogram for the Whole Range will reflect the change.



4. **Diagram I-2** is another example of setting the cursor range; it has been set to 100 divisions.

5. **Diagram J-1** shows that cursor 1 is used for the temperature readings and the lower region shows the Relative Humidity records. In **Diagram J-2** the divisions are set to 130.

6. **Diagram I** is a Temperature example using Diagrams I-1 and I-2 as data sources. **Diagram J** is a Temperature and Humidity example using Diagrams J-1 and J-2 as data sources.

7. The right side of Diagram I indicates **Maximum, Minimum, Mean and Standard Deviation (Std. Dev)** values for Whole Range (upper part) and Cursor Range (lower part).

Maximum	85.1
Minmium	41.4
Mean	72.0
Std.Dev	11.6

Maximum: The highest reading in Whole Range or Cursor Range.

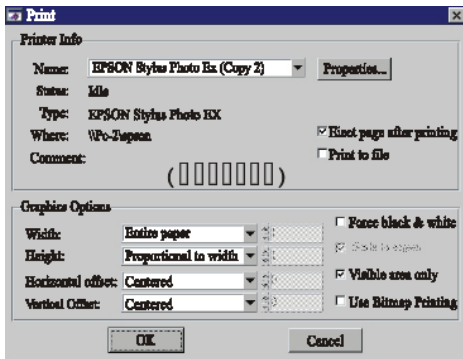
Minimum: The lowest reading.

Mean: The Average reading.

Std. Dev.: A calculation of the deviation between each reading and the Mean value (See **Diagram I-1**).

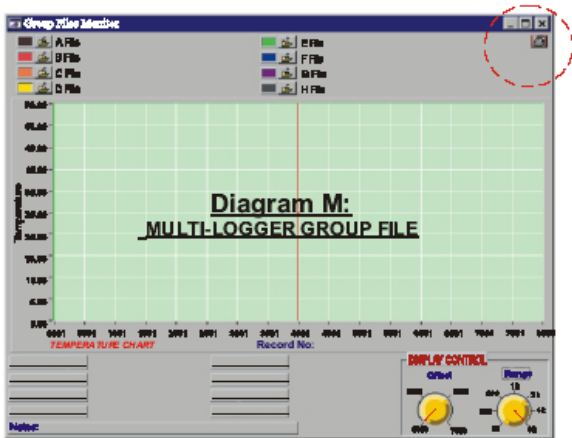
Print Graph

Press the PRINT icon to print the graph.




Group Files

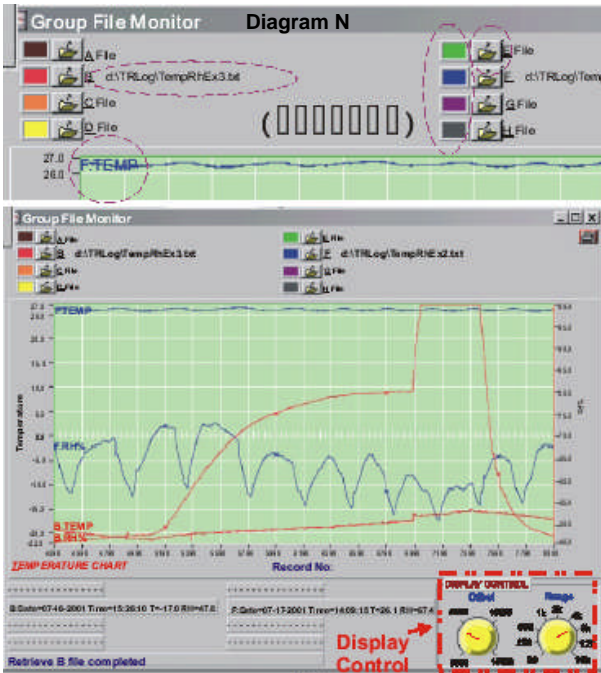
Click GROUP FILES to view the "Multi-Logger Monitor" designed to view and compare data files. **Diagram M** shows the screen as it appears before the icon is clicked. Select the color of the curve by clicking the color block. Print the data by clicking the printer icon at the right-most top corner.



Note: To retrieve a file to replace the current file shown on the graph:

- Select the file to replace
- Choose *transparent* from the color selections (graph disappears)
- Select the file to retrieve

Click  to select the file that will be used for comparison, click the color icon box to select the desired color. Each file is represented by a capital letter (A through H) with the file name following the letter.



When comparing data files:
Diagram M shows the main screen before a file is retrieved.
Diagram N shows the main screen with an example file loaded.
 The offset and range settings can be changed by moving the indicator on the yellow rotating knob (refer to Diagram O).

Temperature Chart

The Temperature Chart displays the data after all readings are completely downloaded.

Cursor Status

The Cursor Status indicates the exact positions of **Cursor 1** and **2**.

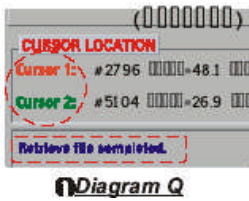
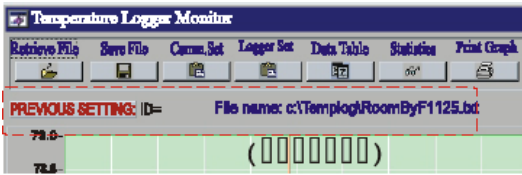


Diagram Q

Previous Setting

Previous setting records are listed in this column for reference.



To download data from another datalogger without exiting the current screen:

- a) Click "PREVIOUS SETTING" to replace the last logger data with a new one.
- b) Close and reopen the program.

Note: Clicking on "Retrieve File" will not download from a new datalogger; Follow the above instructions.

Message

The message area is blank if no file has been retrieved. After a file is retrieved the message will display as follows:
"Retrieve file completed"

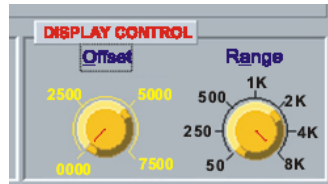
Download Commands

Start - To begin downloading data (See below diagram)
Stop - To manually stop downloading data.
Exit - To exit the Download utility.

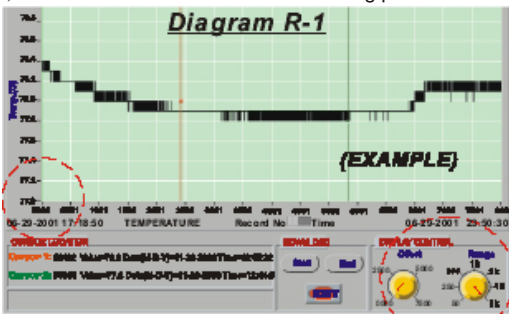


Display Control

Offset - Allows the user to select a point in the reading log to begin viewing the data. See the examples below.

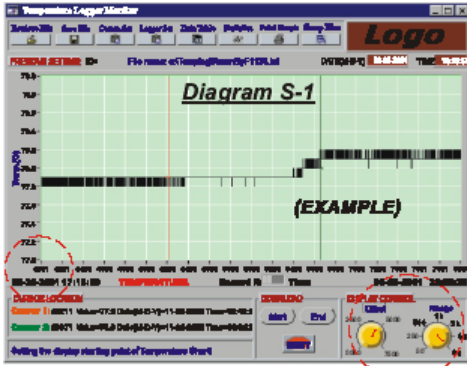


Example 1: Set the Offset by clicking and dragging the red indicator to "0000" (Diagram R-1). The screen shows 0001 as the starting point for the 8,000 record total.



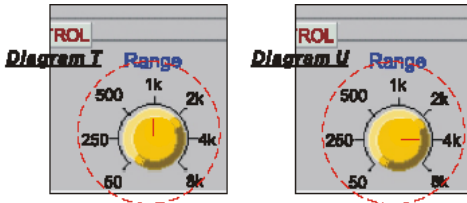
Example 2:

Set the Offset to "4000" (refer to Diagram S and S1). The screen shows 4000 as the starting point for the 8,000 record total.



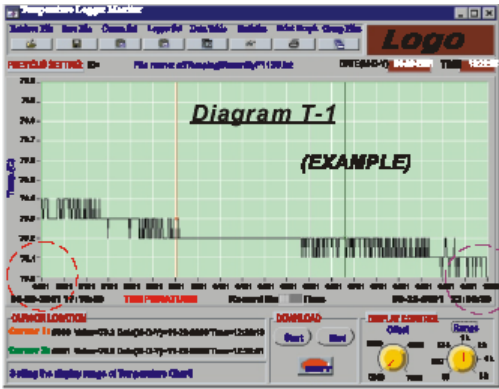
Display Control (for X-Axis records)

Range - Allows the user to configure the data range.



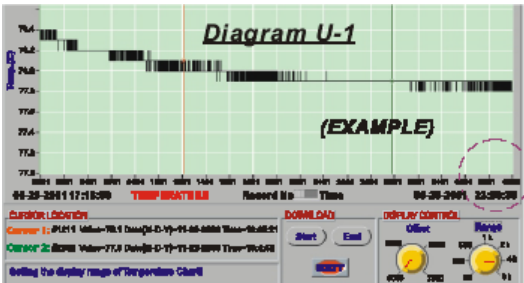
Example 1:

Set the Range by clicking & dragging the red indicator (Diagram T) to "1K" (Diagram T-1 shows data records from 0001 to 1000).



Example 2:

Set the Range to "4K" as in Diagram U. Diagram U-1 shows the data records from 0001 to 4001.



Battery Replacement

Follow these steps to remove and replace the battery:

1. Remove the four (4) rear Phillips-head screws
2. Ensure that the o-ring remains in its groove.
3. Remove the expired battery.
4. Insert a new battery (CR2) ensuring correct polarity.
5. Fasten the four rear screws.



You, as the end user, are legally bound (**Battery ordinance**) to return all used batteries and accumulators; **disposal in the household garbage is prohibited!**

You can hand over your used batteries / accumulators at collection points in your community or wherever batteries / accumulators are sold!

Disposal: Follow the valid legal stipulations in respect of the disposal of the device at the end of its lifecycle

Specifications

Display	3-digit multi-function LCD
Front panel status LEDs	Two (2): RECORD and ALARM
Temperature range	-40 to 85°C (-40 to 185°F)
Temperature resolution	0.1° up to 99.9°; 1° from 100° to 185°
Temperature accuracy	±0.6°C (1.2°F) from -20 to 50°C (-4 to 122°F) ±1.2°C (2.4°F) all other ranges
Humidity range & accuracy	0.0 to 99.9% Relative Humidity; Accuracy: ± 3%
Datalogger storage	16,000 temperature readings (8,000 temperature and 8,000 humidity readings on the 42270)
Sampling rate	Programmable from 1 second to 12hours
Power supply	One 3.6V ½ 'AA' lithium battery
Battery Life	1 year: 5 second sample rate in sleep mode 3.8 months: 24 hour sample rate in non-sleep mode
Low battery indicator	Display shows 'LO'
Cable length	150cm (60")
Operating Temperature	0 to 40°C (32 to 104°F) (docking station)
Operating Humidity	10 to 80% RH (docking station)
Dimensions	124 x 92mm (4.9 x 3.6")

Copyright © 2008 Extech Instruments Corporation

All rights reserved including the right of reproduction in whole or in part in any form.