



- IR Thermometer with Type K Input and 20 Point Memory
- Automatic capture emissivity for targeting



8833/8835 compact Infrared Thermometer provide fast, easy, and accurate readings for most surface temperature measurements with Type K Input and 20 Point Memory

- 30 : 1 distance to spot size
- 13 : 1 distance to spot size

- IR Thermometer with Type K Input and 20 Point Memory
- High 30:1 distance to target ratio measures smaller surface areas at greater distances (8835)
- Widest temperature range from -50.0 to 1050°C (-58.0 to 1922°F)
- Unique flat surface, modern housing design
- Built-in laser pointer
- Type K temperature measurements
- Automatic capture emissivity for targeting
- Automatic Data Hold
- Max, Min, DIF, AVG record
- High and low alarm
- Adjustable emissivity

Features	8833	8835
User selectable °C or °F	*	*
Laser targeting	*	*
Automatic Data Hold	*	*
Auto Power Off	*	*
White Backlit LCD Display	*	*
Overrange indication	*	*
Trigger lock	*	*
Max, Min, DIF, AVG record	*	*
High and low alarm	*	*
Adjustable emissivity	*	*
Type K temperature measurements	*	*
High Temperature (1050°C/1922°F)		*
Optical Resolution (Distance to Spot size)	13:1	30:1

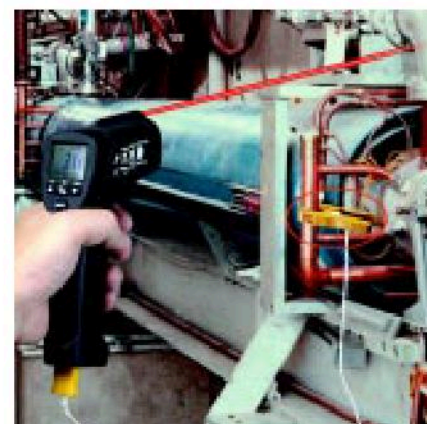
Specifications	8833	8835
IR Temp. Range	-50°C to 800°C/ -58°F to 1472°F	-50°C to 1050°C/ -58°F to 1922°F
IR Temp. Resolution	0.1°C/°F	0.1°C/°F
Type K Temp. Range	-50°C to 1370°C/ -58°F to 2498°F	-50°C to 1370°C/ -58°F to 2498°F
Type K Temp. Resolution	0.1° up to 2000°, 1° over 2000°	0.1° up to 2000°, 1° over 2000°
Response Time	Less than 1 second	Less than 1 second
Basic Accuracy	±1.5% of reading	±1.5% of reading
Emissivity	Adjustable 0.10~1.0	Adjustable 0.10~1.0



temperature probe



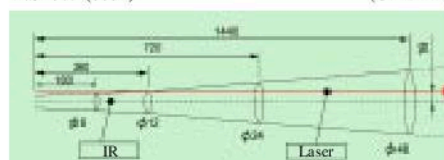
Thermistor clamp



Distance (D) to Spot size(S)

D:S=30:1(8835)

(Unit: mm)



Size(HxWxD): 180mm x 106mm x 48mm

Weight: 250g

Accessories:

9V battery, Carrying case and clamshell, type K temperature probe