



Features

- 16" inch Gooseneck detector is easy to measure the hard-to-reach areas.
- High Sensitive and Accurate
- Easy-to-use design
- Double LCD digital display
- Low power consumption
- Data Hold and MAX Hold function
- Low battery indication



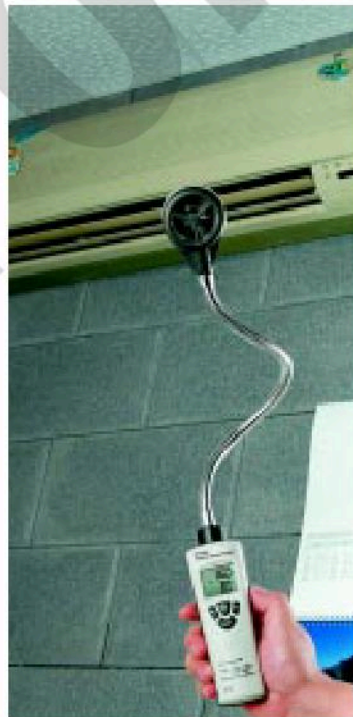
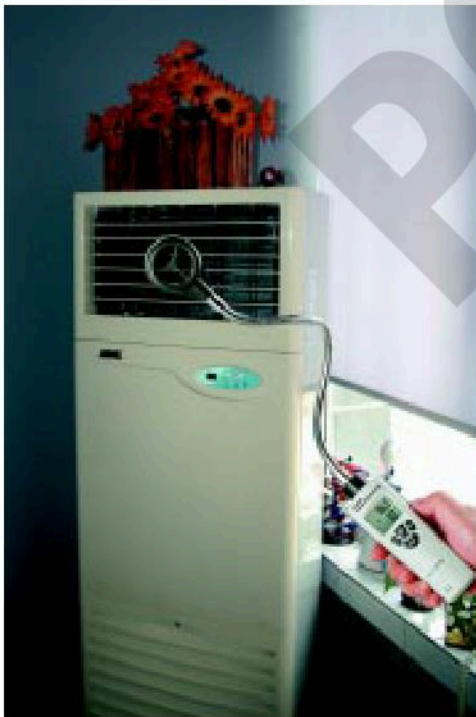
16" inch Gooseneck detector

Specifications

Air Velocity	Range	Resolution	Accuracy
m/s(meter per second)	0.60~30.00	0.01	±3% ±0.20m/s
ft/min(feet per minute)	119~5900	1	±3% ±40ft/min
km/h(kilometers per hour)	2.2~108.0	0.1	±3% ±0.8km/h
MPH(miles per hour)	1.4~67.0	0.1	±3% ±0.4MPH
Knots(nautical miles per hour)	1.2~58.0	0.1	±3% ±0.4knots
Air Temperature	14-140°F(-10-60°C)	0.1°F/C	±4.0°F(2.0°C)
Air Flow	Range	Resolution	Area
CFM	0-999900	0.1	0-999.9 ft²

Size(HxWxD): 163mm x 45mm x 34mm

Weight: 210g



EMC
EN: 50081-1, 50082-1
EN: 60825-1

Accessories :

9V battery, gift box and carrying case.