



123/125/125B/127 are used to measure the moisture level in sawn timber (also cardboard, paper) and hardened materials (plaster, concrete and mortar). They display the moisture level. The instruments have an average adjustment for European wood based on a wood temperature of 20°C.

127 is 2 in 1 digital and analog moisture meter

Features

- Large LCD display
- Readings with Moisture Probe or Hammer Electrode
- Readings with Integral electrod Pins



Calibration and battery check

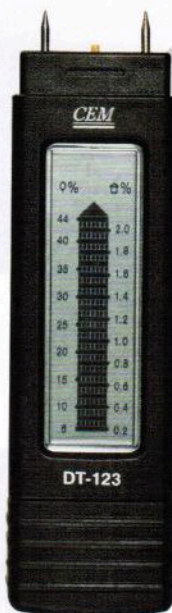
Specifications

Measuring principle	Electrical resistance
Electrode length	8mm
Electrodes	Integrated, replaceable
Measuring range	Wood: 6-44%
	Material: 0.2-2.0%
Display Accuracy	Wood: ±1%
	Material: ±0.05% (127)
Battery	3 x Cr 2032, replaceables
Temperature measuring	0-60°C
Ambient temperature	0-40°C
Ambient moisture	0-85%

Size(HxWxD): 123/127: 130mm x 40mm x 33mm
Weight: 99g
Size(HxWxD): 125/125B: 140mm x 48mm x 33mm
Weight: 93g



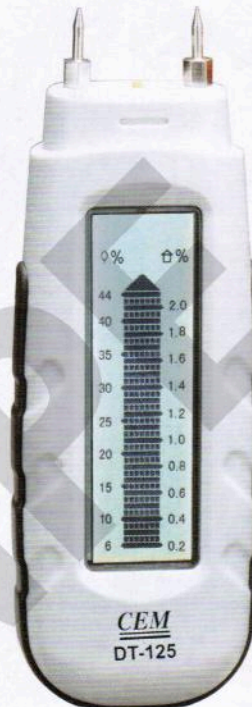
replaceable pin



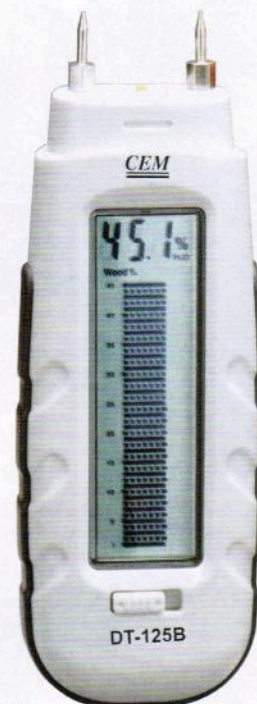
Model 123



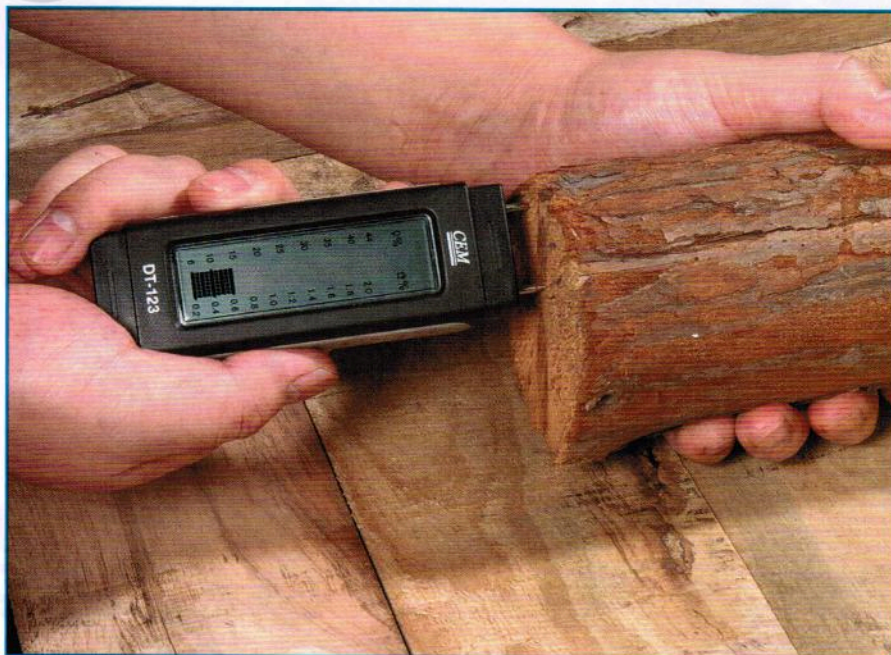
EMC
EN: 61326



Model 125



Model 125B



Accessories :
battery, clamshell